

AXIOM
WIRING ACCESSORIES

HEAT DETECTOR ALARM

WITH BUILT-IN 10YRS LIFE DC 3V LITHIUM BATTERY

INSTALLATION/OPERATION INSTRUCTIONS

Code:
ALRFHB



DESCRIPTION

Built-in non-replaceable heat alarm. The alarms mount onto a base. heat alarm can rapidly detect incremental temperature and absolutely meet heat level.

RECOMMENDED LOCATIONS FOR ALARMS

1. For best protection heat alarms should be installed as part of a complete fire protection system that also includes smoke alarms. Heat alarms are best suited to areas such as boiler rooms, kitchens, laundry rooms and garages where dust, fumes and moisture can cause nuisance alarms in smoke detectors. Heat alarms should not be installed in escape routes instead of smoke alarms. They should only be used in the above applications and where possible be interlinked to smoke alarms. (Smoke alarms should be installed in circulation areas forming part of escape routes and in every room in the home).

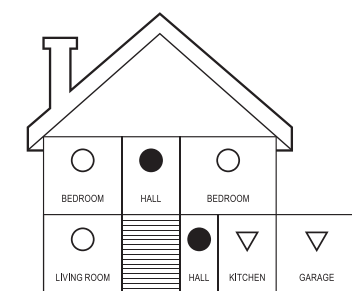
2. When heat alarms are installed in a room, they should be placed on the ceiling, ideally in the centre of the room. They should be at a distance no greater than 5.3m from the farthest wall no greater than 5.3m from a door to any room in which a fire might start and no greater than 5.3m from the next heat alarm

NOTE: Heat alarms should not be wall mounted.

3. Closed doors and other obstructions will interfere with the path of heat to an alarm and may prevent occupants from hearing an alarm on the other side of a closed door. Install sufficient alarms to compensate for closed doors and obstacles. For further help and information on types and location of fire defection alarms refer to BS5839 pt 6 and the Fire Safety guidance given by the Department of Transport, Local Government and the Regions (DTLR).

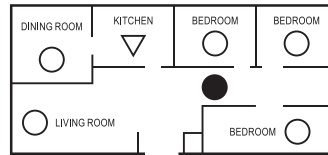
CAUTION: Research indicates that substantial increases in warning time can be obtained with each properly installed additional alarm. It is strongly recommended that the advice in 1 above be followed to ensure maximum protection.

TWO Storey dwelling

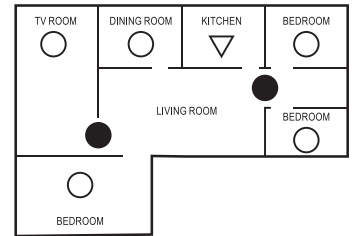


①

Single storey, one sleeping



Single storey, two sleeping



- Smoke alarms for limited protection
- Additional smoke alarms for better coverage
- ▽ Heat alarms

IMPORTANT: These heat alarms are intended primarily for use in single occupancy private dwellings. For use in other applications the manufacturers advice should be sought.

LOCATIONS TO AVOID

DO NOT locate heat alarms :

1. In turbulent air from fans, heaters, doors, windows, etc.
2. In high humidity areas such as bathrooms and shower rooms or where the temperature exceeds 39°C (100°F) or falls below 5°C (40°F)
3. At the peak of an 'A' frame ceiling - dead air at the top may prevent smoke and heat from reaching the alarm to provide an early warning.
4. Less than 300mm (12 inches) from a wall when mounted on the ceiling.
5. In very dusty or dirty areas - dirt and excessive dust can impair the performance of the alarm.
6. Within 300mm (12 inches) of a light fitting or room corners.
7. In locations that would make routine testing or maintenance hazardous, (e.g. over a stairwell).
8. On poorly insulated ceilings.
9. Near objects such as ceiling decorations that might impede the path of heat to the alarm.
10. Within 1500mm (5 feet) of a fluorescent light fitting. Further help and information may be found in BS5839 Part 6.

Activation

Press test button and hold it for above 3 seconds until LED lights, and release it within 2 seconds, the unit will generate a "beep" indicates that it is activated and goes into work status.

Wireless Interconnecting function

1. Ensure product activation is complete.
2. Select one of smoke alarm as the MASTER unit. Treat all other units as SLAVE units.
3. Press the test button on the MASTER unit three times within two seconds, the red LED will flash quickly, the unit is now in send radio signal mode. This mode will last for 90 seconds.
4. Repeat the above steps on all other SLAVE units.

Clear wireless connection function

Press the test button on any SLAVE unit three times within two seconds, the red LED will flash quickly, then press and hold the test button again until the red light goes out the first time and release the button immediately, the red LED will flash slowly, at this time, press the test button again, the SLAVE unit will beep 3 times, which means that the SLAVE unit clears wireless connection successfully.

CAUTION:

MUST activate alarm first, or else there is no function for this unit. The smoke alarm is designed to be wirelessly interlinked with up to 40 products.

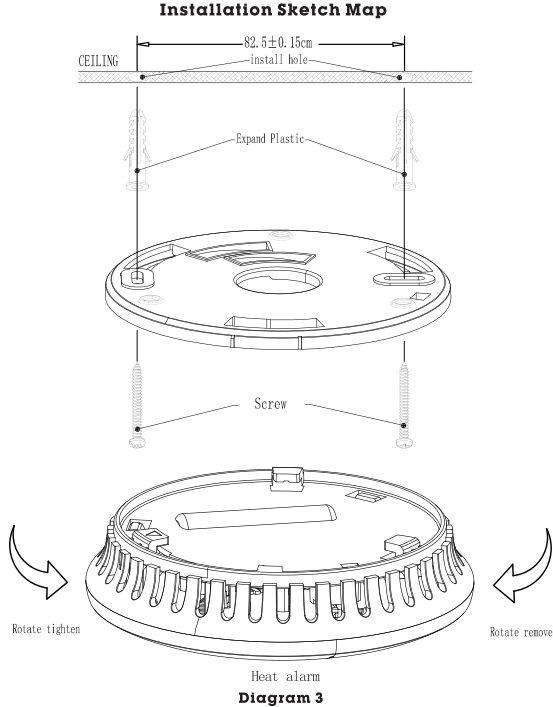
They are not designed to communicate with wireless alarms from other ranges or manufacturers. These alarms need to be "learning" or interlinked in order to communicate with each other. If one alarm activates, all other interlinked alarms will also sound. Only successful interconnection units can clear the radio signal. Clearing the radio signal only removes the radio signal from the

②

slave unit. The MASTER unit can't clear the radio signal.
The THS 385 series heat alarm can be interconnected with TSS 38 series smoke alarm

INSTALLATION:

WARNING : To prevent injury, this unit must be securely attached to the ceiling in accordance with the installation instructions.



OPERATION AND TESTING:

Testing:

Test by pushing the test button on the cover. This will sound the alarm if the electronic circuitry, alarm, and battery are working. If no alarm sounds, the unit has defective batteries or other failures. **DO NOT** use an open flame to test your alarm, you could damage the alarm or ignite combustible materials and start a structure fire.

NOTE: WEEKLY TESTING IS REQUIRED

Normal Condition

The red LED should flash every 48 seconds to show that the alarm is active.

Alarm Condition

When the alarm detect the high heat and sounds the audible alert, the red LED will flash one flash/second. The flashing LED and pulsating alarm will continue until the detected temperature lower to be normal.

Low Power Pack Condition

IMPORTANT: Your smoke alarm requires the power pack to have sufficient capacity of power to operate correctly. Should your smoke alarm enter a low power pack condition the unit will emit an audible chirp once every 48 seconds with light flash once. When this occurs you must replace the alarm immediately. Your smoke alarm will continue to warn of this low power pack condition for at least 30 days, however, failure to change the alarm after this time would mean your smoke alarm may have insufficient power to alert you in a real fire situation.

Fault indication

The alarm chirp occurs every 48 seconds.

Alarm silence

WARNING: Before using the alarm's hush feature, fully identify the source of the heat build up and make sure that the area is safe. To activate control push and release the test/ false alarm control button in the center of the alarm. The alarm will silence immediately and the red light (LED) will blink approximately every 10 seconds for the next 8 minutes. This feature is to be used only when a safe condition is know to exist. The Hush feature will silence the alarm for approximately 8 minutes. A rapid rise in temperature will override the false alarm control and cause the unit to sound an alarm. After 8 minutes the

heat alarm will revert to normal operation. If the unit still detects a dangerous situation the alarm will sound again. If interconnected alarms are installed, the unit that detects the high temperature and sounds the alarm cannot be inadvertently silenced by the TEST/Hush button of other units. In this case all of the alarms will continue to sound for as long as a dangerous situation is detected or until the TEST/Hush button of the initiating alarm is pressed. If the alarm does not go into False Alarm Control and continues to sound its alarm, the heat in the area is too high and a dangerous situation may exist - take emergency action.

TROUBLE SHOOTING

Problem	Method of disposal
Heat alarm does not sound when tested. NOTE: Push and hold test button for at least five (5) seconds while testing!	1.Must activate alarm before installation. 2. If there are still failures during warranty, you can return to your retailer. 3.If the unit is out of warranty, please replace another new alarm.
The alarm "chirp" with red LED flashes once every 48 seconds.	The battery is under low battery status, please replace the smoke alarm device.
Heat alarm sounds unwanted alarms.	Hire an electrician to move heat alarm to a new location. See the Recommended Locations for alarms section of this user guide.
Interconnected heat alarms do not sound when system is tested.	1. Press and hold button for at least, five seconds after the first unit sounds. 2. See Wireless Interconnecting function section of this user guide.

WARRANTY INFORMATION

Each new smoke alarm device to be free from defects in material and workmanship under normal use and service for a period of 5 years from the date of purchase. This warranty does not cover damage resulting from accident, misuse or abuse or lack of reasonable care of the product. In no case shall company be liable for any incidental or consequential damages for breach of this or any other warranty express or implied, whatsoever. The bad products can be mailed to the seller and detail the problem.

SPECIFICATIONS:

Power: built-in DC 3V(CR17450G) Lithium battery (battery not replaceable)

Alarm Volume: >85dB (A) at 3 meters

Alarm Sensitivity: 54°C to 65°C

SILENCE TIME: approx. 8 minutes

Comply With: BS 5446-2:2003

Sound Pattern: ISO8201 (BI 0.5s - pause 0.5s - BI 0.5s - pause 0.5s - BI 0.5s - pause 1.5s, with the RED LED flash, repeated this alarm pattern)

Wireless alarm sound pattern: BI - BI - pause 1.2s, with the red LED flash, repeat this alarm pattern.



UK: 44-48 Freshwater Road, Dagenham, Essex RM8 1RX
EU: CED 46 Rosemount Business Park Dublin. D11 K26W